

## Flomatic Submersible Pump Check Valve

(Patented and others Pending)

### Series 80DI/SS VFD

With Stainless Steel Guiding

#### Delivers Longer Service Life

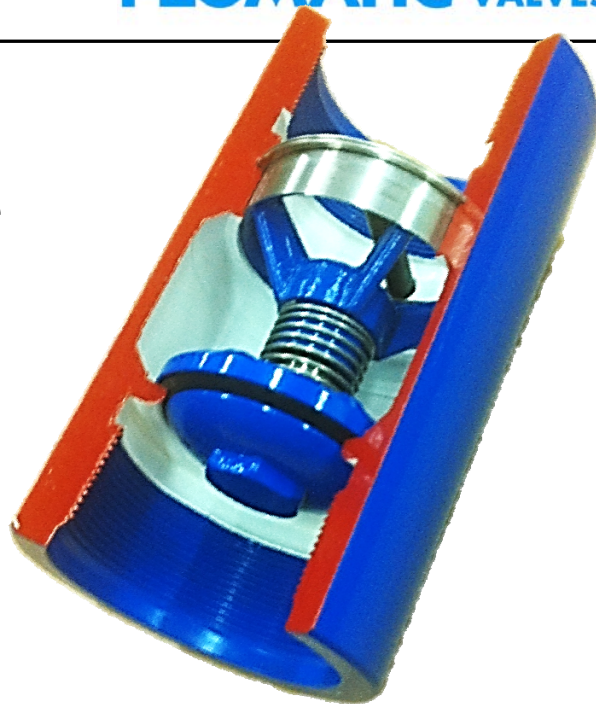
- Variable Flow Rates (VFD Controlled Pumps)
- Well Water Pump Systems
- Municipal/Public Water Systems
- Irrigation and Sprinkler Systems
- Over 70 Different Models
- 12 Different Sizes

#### Features & Benefits

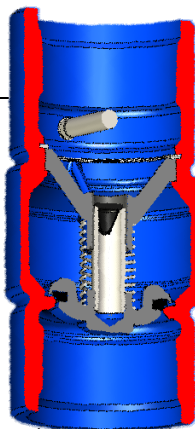
- Lower Friction Loss
- Noiseless Operation
- Stainless Steel Guiding (Replaceable)
- Strong Ductile Iron Valve Body (SS Optional)
- Un-Leaded Body, NSF 372 Certified
- Corrosion Resistant Internal Components
- "Thread-Lead-In" section
- Longer thread areas
- Optional "Break-Off" Plug
- Many Body Configurations

#### Materials

- **Valve body:** Ductile Iron (316SS optional)
- **Valve Guide:** 316 Stainless Steel
- **Follower:** Ductile Iron (316SS Optional)
- **Elastomer Disc:** Buna Nitrile (FDA approved)
- **Spring:** 316 Stainless Steel



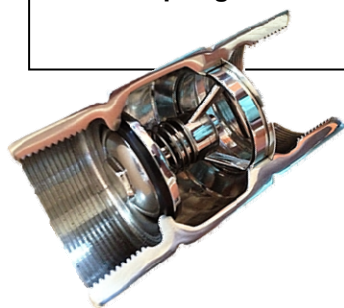
Flomatic Check Valve  
Model 80DI VFD (Patented and other Pending)



**Industry First Energy  
Efficient VFD Designed  
Check Valve**  
(Patented)

#### Lead Free

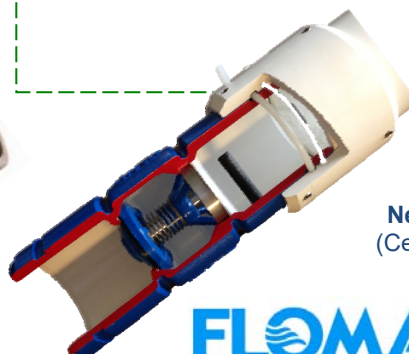
The Series 80DI VFD Check Valves conforms to the "California Lead Plumbing Law" or "Complies with California Lead Plumbing Law" and Vermont State certified to IAPMO R&T certification mark and the Uniform Plumbing Code.



New Model 80S6 VFD  
316SS



New Model 80MDI VFD  
and Model 80S6 VFD



New Model 80DICL VFD  
(Certa-Lok™ also in 316SS)

**FLOMATIC® VALVES**

High Quality Valves Built to Last . . .



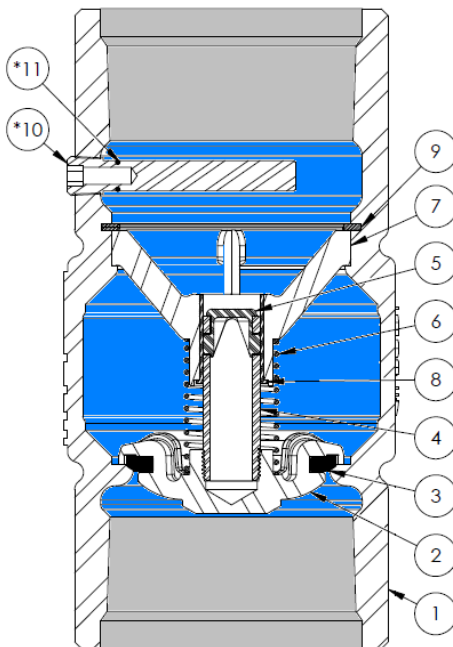
## Flomatic Submersible Pump Check Valve Series 80DI/SS VFD Stainless Steel Guided (Patent Pending)



### Product Operation

Flomatic has 80 years' experience designing and manufacturing valve products. The Model 80DI/SS VFD is designed to minimize flow losses and hydraulic shocks in the pumping system. The standard epoxy coated (NSF approved powder) ductile iron body is stronger than bronze or stainless steel design to support submersible pumps deep in a well water casing. Its unique hydraulic custom molded Buna-N rubber sealing surfaces are supported by a mechanical back-up support to maximize the check valve service life. The patent pending spring loaded poppet system is guided generous seat bore. The unique poppet system insures that the valve automatically tight and noiseless after each pump cycle. The radii seat allows a self-cleaning "one point swiping action" by the rubber seal disc during each valve closing cycle. All internal parts are made corrosion resistant material.

### Other Materials and VFD Models



Item #	Qty.	Description	Material	ASTM
1	1	Body	Ductile Iron	A536 65-45-12
2	1	Poppet	Ductile Iron	A536 65-45-12
3	1	Seat Disk	Buna-N	-----
4	1	Stem	Stainless Steel	A312
5	1	Stem Cap	Engineered Composite	-----
6	1	Spring	Stainless Steel	A276
7	1	Stem Guide	Ductile Iron	A536 65-45-12
8	1	Bushing	Engineered Composite	-----
9	1	Retaining Ring	Stainless Steel	A276
*10	1	Break-Off Plug	Stainless Steel or Engineered Composite	-----
*11	1	O-Ring	Buna-N	-----

\* Optional

**Model 80S6 VFD  
(316SS)**



**Model 80E VFD  
(Unleaded Bronze)**



### Product Specification

- Connection: 2" thru 12" (Optional Thread types available)
- Max pressure: 400 PSI (27 bar)
- Max temperature: 180°F (80°C)

### Product Connection Options

- With Optional SS-Break-off plug: Add "PLG" to part number or "PPLG" for a break-off plug in a composite material

### Product Warranty

- Flomatic standard one year standard valve product warranty applies. See price list with warranty information for details.

- ☑ More Flow = Save \$ (Higher Efficiencies)
- ☑ Noiseless = Quiet operation (Longer Service Life)
- ☑ Simple Construction = Higher Reliability (Less Parts)
- ☑ VFD Compatible = Installation Flexible (Customer Friendly)



**FLOMATIC® VALVES**

15 Pruyn's Island Drive, Glens Falls, New York 12801-4424  
Phone: 1-800-833-2040 Fax: 518-791-9798

[www.flomatic.com](http://www.flomatic.com)

High Quality Valves Built to Last . . .